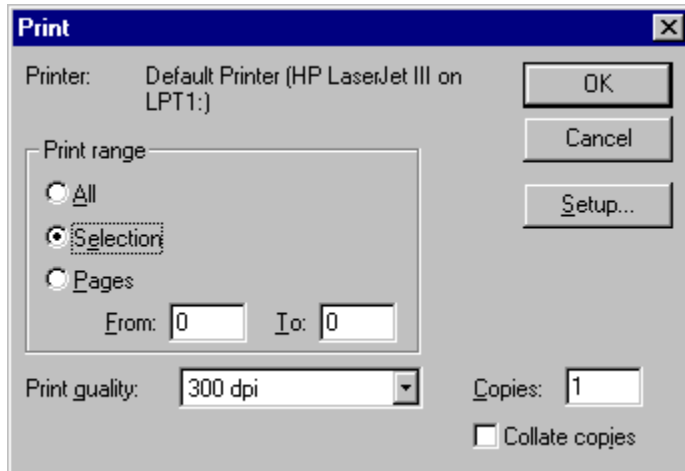
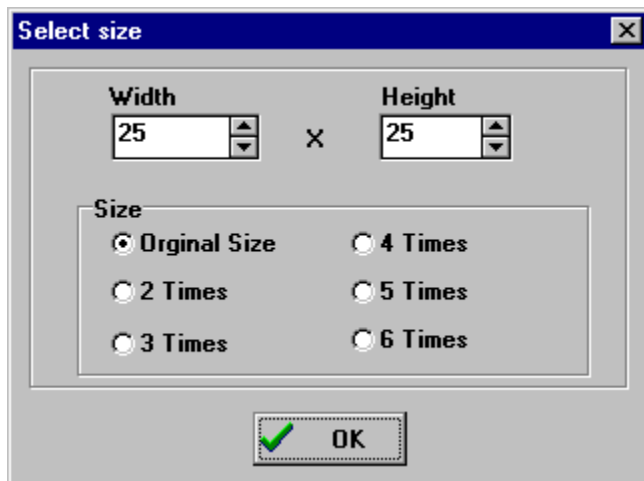


## Print Image

The image that is in the viewer may be sent to the printer. The first dialog that appears is the printer setup dialog below:



Click the OK button to invoke the print size dialog:



Use the controls in this dialog to control the size and magnification of the final print out and click the OK button start the printout.



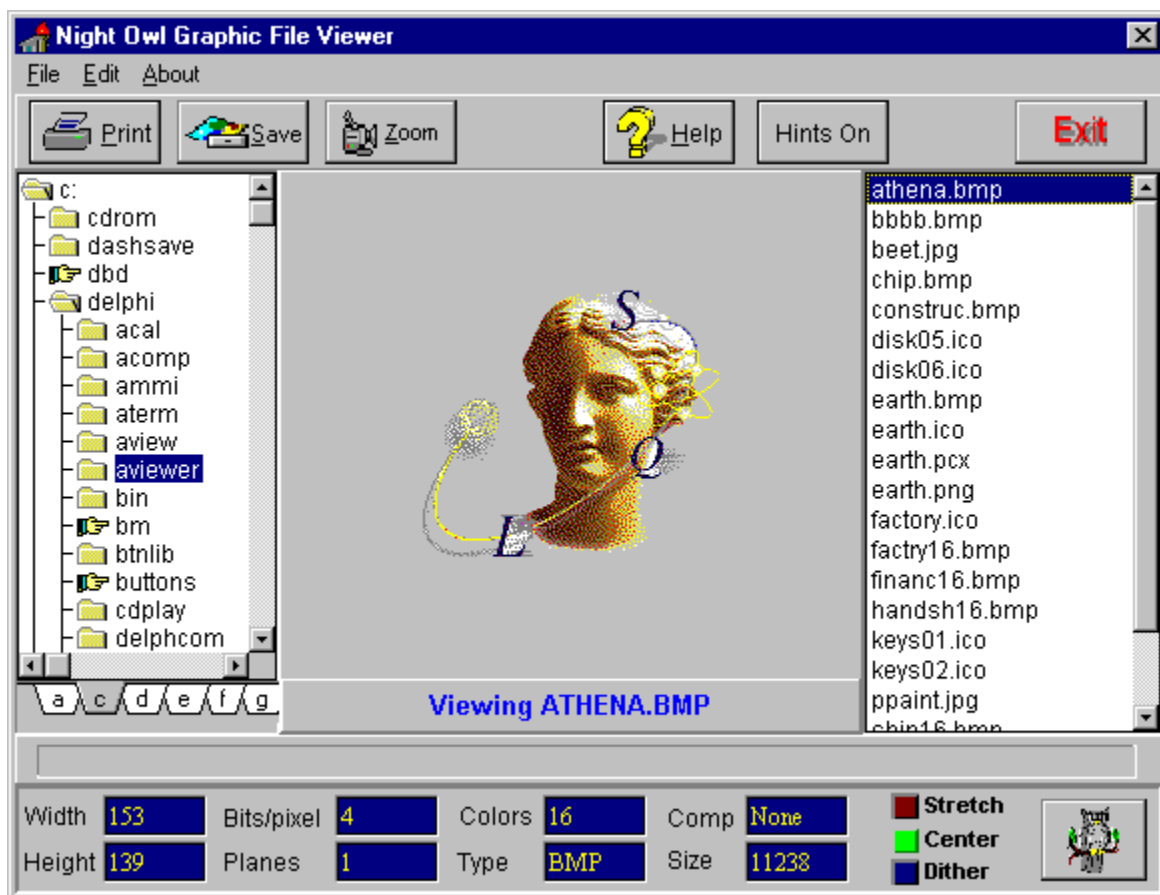
# Night Owl Graphics File Viewer

**What is OWLVIEW?**

[Supported Graphic File Formats](#)

[About OWLVIEW](#)

Click on item of interest in graphic below for help on that item:



## Supported Formats

OWLVIEW program supports the following formats:

**BMP, CMS, ICO, JPG, PCX, PNG, and WMF**

## What is OWLVIEW?

OWLVIEW is a sophisticated graphics file viewer that operates under Windows 3.1 or Windows 95. It provides drive and directory list boxes for navigating to any directory in the host system and file list box for displaying the names of supported formats. OWLVIEW will load and display a graphics file at the click of a mouse and provides the capability to stretch the image to fit the main viewing area, center the image, and full screen viewing of the image.

OWLVIEW also provides the capability to save a loaded file image to any of the supported formats and can print graphics images at several magnifications.

## **About OWLVIEW**

OWLVIEW is the copyrighted property of:

**Night Owl Publisher  
1611 Falconer Stillwater Road  
Jamestown, NY 14701**

You can reach Night Owl Publisher at:

|              |                     |
|--------------|---------------------|
| <b>Voice</b> | <b>716-484-3066</b> |
| <b>FAX</b>   | <b>716-483-3920</b> |
| <b>BBS</b>   | <b>716-483-3925</b> |

OWLVIEW was designed and developed for Night Owl Publisher by:

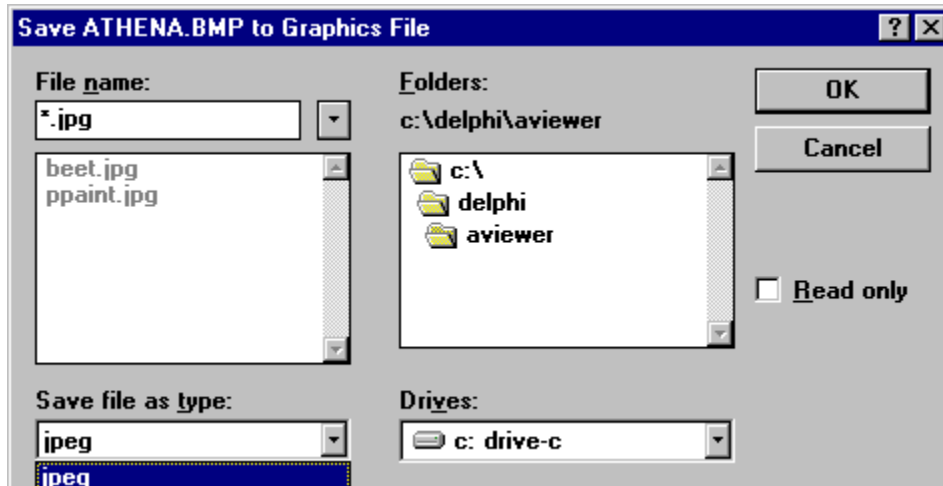
**New-Ware  
8050 Camino Kiosco  
San Diego, CA 92122**

You can reach New-Ware at **619-455-6225**

Press the help button to view this help file.

## Save Image To File

You may save the current image to a file in any supported format using the Save File Dialog below:



Select the drive, directory, and file name. Then select the file type to save and save the file by pressing the OK button.

Click on the Zoom button to display the current image full screen. Click on the full screen image to return to the normal OWLVIEW display.



Click on the Exit button to close the OWLVIEW program.

Use the directory tree to navigate to the any directory on the current drive. Note that the hand glyphs indicate directories that contain subdirectories. Click on a directory that has subdirectories to access those subdirectories. Click on a directory to display its file in the files list box.

All supported file types are displayed in this box. Click on a file name to load and display its image.

The image viewing area is the area in which the image is displayed. If the image does not completely fill this area, the image may be centered. The image may also be zoomed to full screen size by clicking on the Zoom button.

Click on a drive tab to make that drive letter the active drive, then use the directory tree control to navigate to a specific directory.

The data windows display various data parameters that numerically describe the current image.

The stretch button toggles the stretch mode on/off. When toggled to on, the image will be stretched to fit the main viewing rectangle.

Click on this button to toggle image centering on/off. When on, the image will be centered in the image viewing area otherwise the image will be positioned in the upper left hand corner of the area providing that the image size is smaller than the area size.



Dithering is active when the dither button is toggled on and the image being viewed is not of the same resolution as the current Windows setting.

This button toggles the balloon helpful hints on and off.

Displays the current image width in pixels.

Displays the height of the current image in pixels..

Displays the number of bits used per pixel for the current image.

Displays the number of color planes for the current image.

Displays the number of colors for the current image.

Displays the current image file extension.



Displays the type of compression, if any, used to compress the image.

Displays the image file size in bytes.



